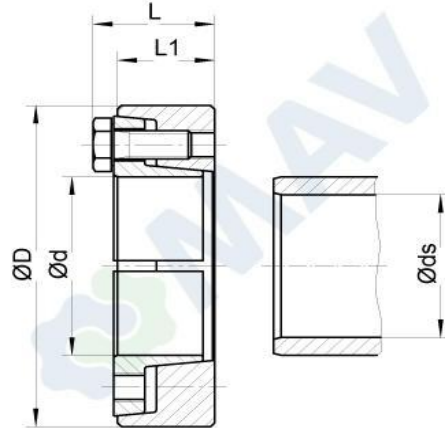


## Shrink Disc MAV 3008 standard duty

### Features:

- shaft to hollow shaft connection
- 2-part design
- not self-locking
- screws DIN 931/933 grade 10.9
- shaft / hub surface finish Ra < 3,2 µm
- hub bore / shaft fitting tolerance:

shaft size ds	ISO tolerances	max clearance
from	to	mm
6	10	0,011
11	18	0,014
19	30	0,017
31	50	0,032
51	80	0,048
81	120	0,069
121	180	0,079
181	250	0,090
251	315	0,101
316	400	0,111
401	500	0,123



Ma: screw tightening torque  
 Mt: max. transmissible torque (Fax=0 kN)  
 Fax: max. transmissible axial load (Mt=0Nm)  
 Ps: contact pressure on shaft  
 Ph: contact pressure on hub OD

### Example of order: MAV3008 – 50 x 90

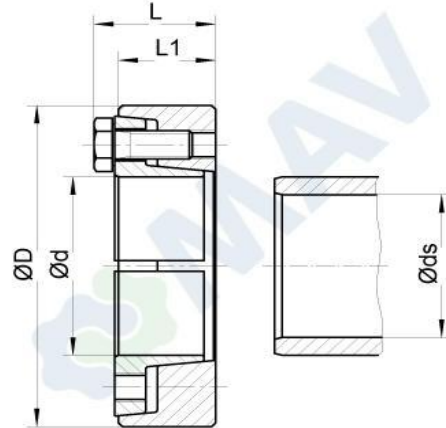
Dimensions				Screws		Performance				Weight
ds	d x D	L	L1	size	Ma	Mt	Fax	Ps	Ph	kg
mm	mm	mm	mm		Nm	Nm	kN	N/mm <sup>2</sup>	N/mm <sup>2</sup>	
9	12 x 35	14.5	11	M5	5	21	4.6	122	301	0.07
10						40	7.9	188	301	
11	14 x 38	14.5	11	M5	5	29	5.3	114	258	0.08
12						51	8.4	167	258	
13	16 x 41	19	15	M6	12	96	14	200	308	0.13
14						132	18	239	308	
15	18 x 44	19	15	M6	12	121	16	190	274	0.14
16						159	19	220	274	
17	20 x 47	19	15	M6	12	146	17	179	247	0.15
18						186	20	203	247	
19	24 x 50	22	18	M6	12	172	18	145	235	0.2
20						218	21	165	235	
21						267	25	184	235	
24	30 x 60	24	20	M6	12	297	24	137	205	0.31
25						352	28	150	205	
26						412	31	162	205	
28	36 x 72	27.3	22	M8	30	563	40	169	234	0.49
30						714	47	187	234	
31						722	46	177	234	
34	44 x 80	29.3	24	M8	30	734	43	135	215	0.62
35						831	47	144	215	
36						933	51	153	215	
38	50 x 90	31.3	26	M8	30	1 230	65	166	241	0.83
40						1 490	74	180	241	
42						1 760	84	193	241	
42	55 x 100	34.3	29	M8	30	1 640	78	172	240	1.2
45						2 080	92	190	240	
48						2 560	107	206	240	
48	62 x 110	34.3	29	M8	30	1 940	81	156	213	1.4
50						2 230	89	165	213	
52						2 340	90	160	213	
50	68 x 115	34.3	29	M8	30	1 810	72	134	218	1.4
55						2 620	95	160	218	
60						3 590	119	184	218	
55	75 x 138	37.4	31	M10	59	2 770	100	156	233	2.3
60						3 760	125	178	233	
65						4 910	151	197	233	

## Shrink Disc MAV 3008 standard duty

### Features:

- shaft to hollow shaft connection
- 2-part design
- not self-locking
- screws DIN 931/933 grade 10.9
- shaft / hub surface finish Ra < 3,2 µm
- hub bore / shaft fitting tolerance:

shaft size ds	ISO tolerances	max clearance mm
from 6 to 10	H6 - j6	0,011
11 to 18		0,014
19 to 30		0,017
31 to 50	H6 - h6	0,032
51 to 80	H6 - g6	0,048
81 to 120	H7 - g6	0,069
121 to 180		0,079
181 to 250		0,090
251 to 315		0,101
316 to 400		0,111
401 to 500		0,123



Ma: screw tightening torque  
 Mt: max. transmissible torque (Fax=0 kN)  
 Fax: max. transmissible axial load (Mt=0Nm)  
 Ps: contact pressure on shaft  
 Ph: contact pressure on hub OD

### Example of order: MAV3008 – 50 x 90

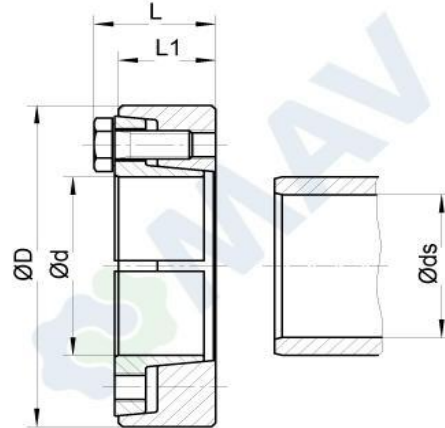
Dimensions				Screws		Performance				Weight
ds mm	d x D mm	L mm	L1 mm	size	Ma Nm	Mt Nm	Fax kN	Ps N/mm <sup>2</sup>	Ph N/mm <sup>2</sup>	kg
60	80 x 145	37.4	31	M10	59	3 200	106	151	218	2.5
65						4 230	130	170	218	
70						5 400	154	187	218	
65	90 x 155	44.4	38	M10	59	4 730	145	159	226	3.4
70						6 030	172	174	226	
75						7 500	200	189	226	
70	100 x 170	49.4	43	M10	59	6 440	184	164	231	4.7
75						7 990	213	177	231	
80						9 720	243	190	231	
75	110 x 185	56.5	49	M12	100	8 810	234	170	236	6.2
80						10 600	267	182	236	
85						11 700	277	178	236	
80	115 x 197	60.5	53	M12	100	11 200	280	177	236	7.6
85						12 200	286	170	236	
90						14 700	326	183	236	
85	120 x 197	60.5	53	M12	100	11 000	259	154	226	7.3
90						13 300	296	166	226	
95						15 900	334	178	226	
85	125 x 215	60.5	53	M12	100	11 600	274	163	241	9.2
90						14 000	312	175	241	
95						16 600	350	186	241	
85	130 x 215	60.5	53	M12	100	10 600	250	149	232	8.8
90						12 800	286	161	232	
95						15 300	322	171	232	
90	135 x 230	66.8	58	M14	160	13 000	289	148	224	11
95						15 200	326	159	224	
100						18 200	365	169	224	
95	140 x 230	66.8	58	M14	160	14 300	301	146	216	11
100						16 800	337	156	216	
105						19 600	375	165	216	
105	155 x 263	70.8	62	M14	160	20 900	398	161	224	16
110						24 000	437	169	224	
115						27 400	477	176	224	
115	165 x 290	78	68	M16	250	31 700	551	182	237	22
120						35 800	597	189	237	
125						39 100	626	190	237	
125	175 x 300	78	68	M16	250	40 000	640	194	248	23
130						44 700	688	201	248	
135						49 700	737	207	248	

## Shrink Disc MAV 3008 standard duty

### Features:

- shaft to hollow shaft connection
- 2-part design
- not self-locking
- screws DIN 931/933 grade 10.9
- shaft / hub surface finish Ra < 3,2 µm
- hub bore / shaft fitting tolerance:

shaft size ds	ISO tolerances	max clearance
from to		mm
6 10	H6 - j6	0,011
11 18		0,014
19 30		0,017
31 50	H6 - h6	0,032
51 80	H6 - g6	0,048
81 120	H7 - g6	0,069
121 180		0,079
181 250		0,090
251 315		0,101
316 400		0,111
401 500		0,123



Ma: screw tightening torque  
 Mt: max. transmissible torque (Fax=0 kN)  
 Fax: max. transmissible axial load (Mt=0Nm)  
 Ps: contact pressure on shaft  
 Ph: contact pressure on hub OD

### Example of order: MAV3008 – 50 x 90

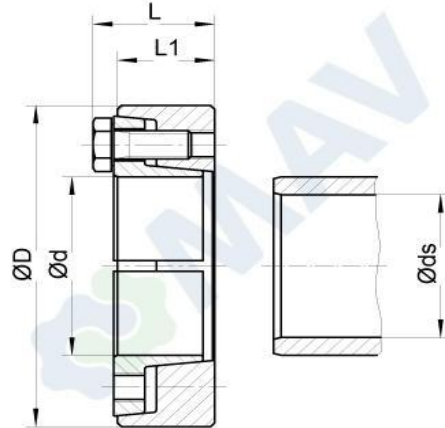
Dimensions				Screws		Performance				Weight
ds	d x D	L	L1	size	Ma	Mt	Fax	Ps	Ph	kg
mm	mm	mm	mm		Nm	Nm	kN	N/mm <sup>2</sup>	N/mm <sup>2</sup>	
135	180 x 320	95	85	M16	250	56 000	829	184	228	34
140						62 100	887	189	228	
145						68 500	945	195	228	
135	185 x 320	95	85	M16	250	53 100	787	174	222	33
140						59 000	843	180	222	
145						65 200	899	185	222	
150	200 x 340	95	85	M16	250	75 100	1 000	200	240	37
155						82 000	1 050	204	240	
160						89 300	1 110	209	240	
160	220 x 370	115.5	103	M20	490	103 000	1 290	195	236	53
165						112 000	1 360	199	236	
170						121 000	1 430	203	236	
170	240 x 405	119.5	107	M20	490	125 000	1 470	201	241	66
180						145 000	1 610	208	241	
190						164 000	1 730	211	241	
190	260 x 430	131.5	119	M20	490	165 000	1 740	189	227	81
200						189 000	1 890	196	227	
210						215 000	2 050	202	227	
210	280 x 460	144.5	132	M20	490	215 000	2 050	182	214	104
220						243 000	2 210	188	214	
230						273 000	2 370	193	214	
230	300 x 485	155	140	M24	840	299 000	2 600	197	224	120
240						333 000	2 770	201	224	
250						369 000	2 950	205	224	
240	320 x 520	155	140	M24	840	301 000	2 510	182	210	139
250						334 000	2 670	186	210	
260						365 000	2 800	188	210	
250	340 x 570	170	155	M24	840	410 000	3 280	208	236	191
260						445 000	3 430	209	236	
270						489 000	3 630	213	236	
260	350 x 580	174	159	M24	840	432 000	3 320	194	223	200
270						475 000	3 520	198	223	
280						520 000	3 710	201	223	
280	360 x 590	174	159	M24	840	527 000	3 760	204	228	205
290						575 000	3 960	207	228	
300						625 000	4 160	211	228	
300	390 x 650	183	166	M27	1250	640 000	4 270	210	233	252
310						693 000	4 470	213	233	
320						743 000	4 640	214	233	

## Shrink Disc MAV 3008 standard duty

### Features:

- shaft to hollow shaft connection
- 2-part design
- not self-locking
- screws DIN 931/933 grade 10.9
- shaft / hub surface finish Ra < 3,2 µm
- hub bore / shaft fitting tolerance:

shaft size ds	ISO tolerances	max clearance
from	to	mm
6	10	0,011
11	18	0,014
19	30	0,017
31	50	0,032
51	80	0,048
81	120	0,069
121	180	0,079
181	250	0,090
251	315	0,101
316	400	0,111
401	500	0,123



Ma: screw tightening torque  
 Mt: max. transmissible torque (Fax=0 kN)  
 Fax: max. transmissible axial load (Mt=0Nm)  
 Ps: contact pressure on shaft  
 Ph: contact pressure on hub OD

### Example of order: MAV3008 – 50 x 90

Dimensions				Screws		Performance				Weight
ds	d x D	L	L1	size	Ma	Mt	Fax	Ps	Ph	kg
mm	mm	mm	mm		Nm	Nm	kN	N/mm <sup>2</sup>	N/mm <sup>2</sup>	
330	420 x 670	203	186	M27	1250	809 000	4 900	192	214	288
340						871 000	5 120	195	214	
350						935 000	5 340	198	214	
340	440 x 740	211	194	M27	1250	909 000	5 350	194	216	392
350						976 000	5 580	197	216	
360						1 046 000	5 810	199	216	
360	460 x 770	211	194	M27	1250	1 035 000	5 750	197	217	423
370						1 106 000	5 980	199	217	
380						1 179 000	6 210	202	217	
380	480 x 800	231.7	213	M30	1700	1 302 000	6 850	204	222	498
390						1 386 000	7 100	206	222	
400						1 472 000	7 360	208	222	
400	500 x 850	231.7	213	M30	1700	1 391 000	6 950	196	213	575
410						1 465 000	7 140	197	213	
420						1 553 000	7 390	199	213	
430	530 x 910	256.7	238	M30	1700	1 825 000	8 480	197	213	753
440						1 928 000	8 760	198	213	
450						2 034 000	9 040	200	213	
450	560 x 940	256.7	238	M30	1700	1 884 000	8 370	185	201	784
460						1 986 000	8 630	187	201	
470						2 091 000	8 890	189	201	
470	590 x 960	278.7	260	M30	1700	2 367 000	10 070	199	215	848
480						2 487 000	10 360	201	215	
490						2 610 000	10 650	202	215	
500	620 x 970	304.7	286	M30	1700	2 644 000	10 570	177	191	917
510						2 753 000	10 790	177	191	
520						2 884 000	11 090	178	191	

Information subject to change without prior notification. © MAV S.p.A.